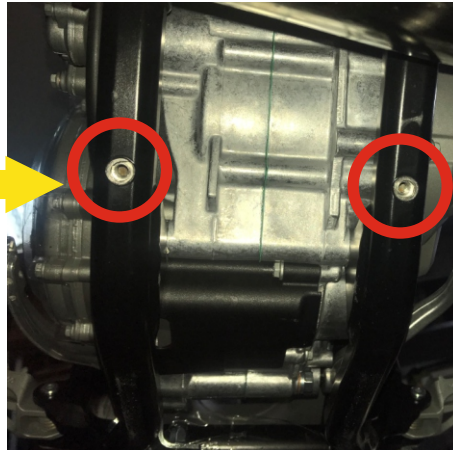
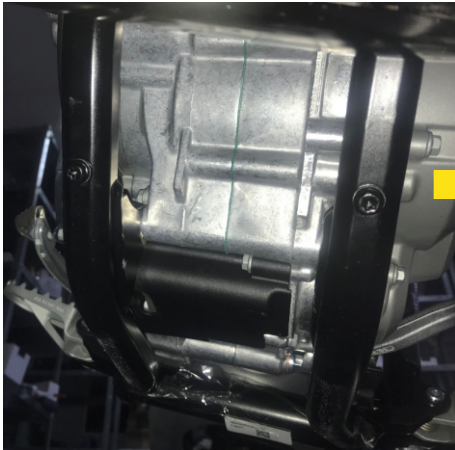


Installation instructions
PG05 - engine and pipe guard
KTM/Husqvarna 250/300 2T 2020MY

ARTAFON.COM



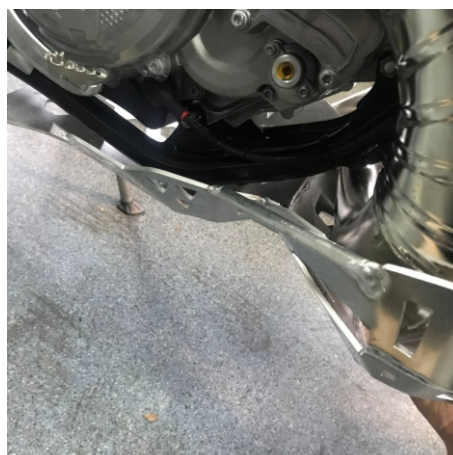
REMOVE SCREWS FROM FRAME SOCKETS



PUT RIGHT REAR HANDLE



INSERT THE GUARD



IT IS RECOMMENDED TO
USE THREAD GLUE



GRIP SCREWS TO FRAME
SOCKETS

Installation instructions
PG05 - engine and pipe guard
KTM/Husqvarna 250/300 2T 2020MY



GRIP SCREWS TO FRAME SOCKETS

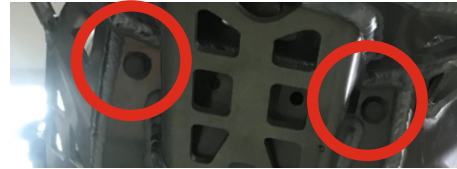


TIGHTEN SCREWS SEVERAL ROTATION



DPRESS THE REAR PART OF THE GUARD TO THE FRAME

REPEAT UNTIL THE SCREWS IN THE FRAMES ARE REACHED



GRIP THE REAR RIGHT HANDLE SCREW



PUT THE LEFT HANDLE AND SCREW THE SCREW



TIGHTEN THE SCREWS OF THE REAR HANDLES



PUT FRONT HANDLE

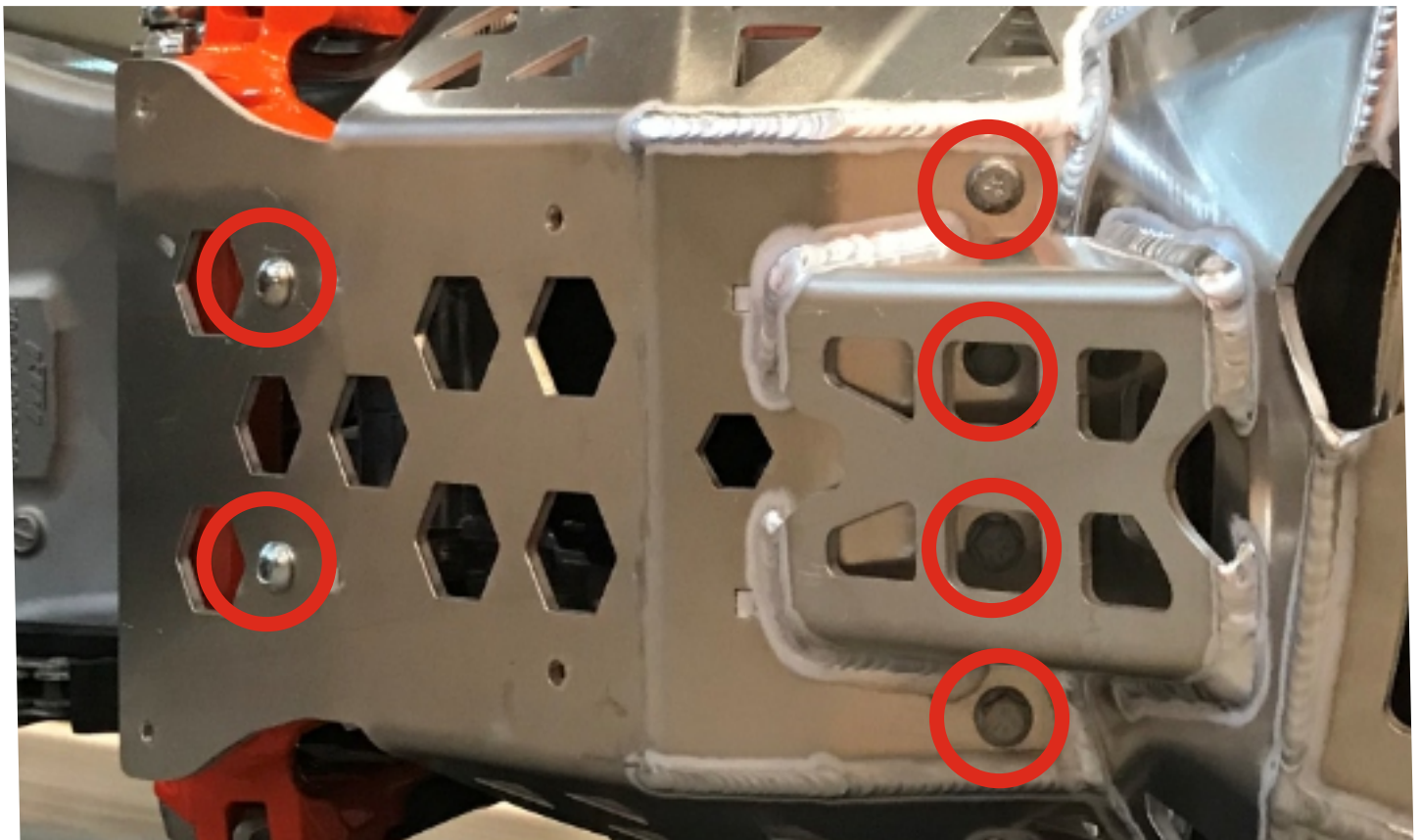


Installation instructions
PG05 - engine and pipe guard
KTM/Husqvarna 250/300 2T 2020MY

ARTAFON.COM



SCREW AND TIGHTEN THE FRONT HANDLE SCREWS



TIGHTEN ALL SCREWS AGAIN

READY!!